

# CAREER HEALTH DISPLAY

---

**Purpose:** To encourage Health Science students to improve their ability to present themselves and communicate career information to others.

**Description:** Teams consisting of two (2) competitors shall develop a visual display of a specific career or cluster of careers in healthcare. The display allows the students to express ideas through an artistic medium to highlight the benefits of a particular career focus. The students will also be judged on their ability to present themselves and communicate the career information to others.

**Dress Code:** Competitors must be in official HOSA uniform or in proper business attire. Bonus points will be awarded for proper dress. Both team members must be properly dressed to receive bonus points.

- Rules and Procedures**
1. Competitors in this event must be active members of HOSA in good standing in the category in which they are registered to compete (Secondary or Postsecondary/Collegiate).
  2. Team numbers and order of competition will be pre-assigned on a random selection basis.
  3. The display must be presented by a team of two. One healthcare career or a cluster of related health careers may be presented.
  4. The work **must** be the work of the competitors, including the artistic aspects of the display. Allowable artwork may include:
    - Competitor produced computer graphics.
    - Clip art used in compliance with copyright laws.
    - Photographs used in compliance with copyright laws.
    - Computer or machine generated lettering.
  5. The display must be able to stand on a standard conference table furnished on site. If 8 ft. tables or banquet rounds are used, there will be two displays per table. Science Fair display boards meeting the maximum dimensions are acceptable. The maximum dimensions are:

HEIGHT: 3 feet      WIDTH: 4 feet      DEPTH: 2 feet

**Table-top Display:** Dimensions include audio-visual equipment, computers, mannequins, pamphlets, brochures, notebook, tape or videotape recording, computer assisted presentation, and any method or combination of methods to display the project.

6. **DISPLAY MEASUREMENTS:** The display will be measured by the Section Leader or Event Manager before judging begins, from a beginning point to the furthest point of the display.
  - Height will be measured from the table top to the highest point of anything on the display, and must not exceed 3 feet.
  - Width will be measured from the widest point of anything on the display to the opposite point.

- Depth will be measured from the widest point of anything on the display to the opposite point.
  - Nothing may overlap the sides of the display table, with the exception of the table drape.
  - Dimensions include audio-visual equipment, computers, mannequins and all other props.
  - Information or display items outside the dimensions will be considered part of the display and subject to point deductions.
7. The competitor is responsible for the safety and proper functioning of all equipment they bring to this event. The competitor *may not* use any flames, body fluids, living organisms, syringes, or potentially hazardous equipment/materials. Invasive procedures and skin puncturing are **prohibited**.
  8. The team will have **thirty (30) minutes to assemble the display**. Parts of the display may be done prior to competition. The time for assembly is to set up what the team has previously created in preparation for their presentation to the judges.
  9. The two (2) member team will report back to the display at their assigned appointment time to present a five (5) minute prepared oral presentation to the judges. Note cards are permitted during the oral presentation. This may include why they chose this career/career cluster, what they learned by researching this career/career cluster, what forms of research they used to complete the display, and what they included on the display and why.
  10. Costumes and props are not permitted during the oral presentation.
  11. **USE OF DISPLAY DURING PRESENTATION:** Visuals or display items used during the presentation/question portion of the event may be touched or picked up **BUT MUST** remain contained within the dimensions of the display. **Items removed from the display will be considered outside the dimensions of the display and subject to point deductions.**
  12. Each team will be judged on their overall display and how well they documented the career/career cluster information through the display. Each team will also be judged on their ability to communicate information to the judges about the career area. During the five (5) minute prepared presentation, time cards will be shown with one (1) minute remaining and “stop” at the end of the 5 minutes.
  13. No equipment/supplies (except tables) will be provided by National HOSA for this event. All equipment/supplies needed must be provided by the team. It is the team’s responsibility to ensure that all equipment is in working condition.
  14. Electricity will not be provided. Teams **MUST** use battery power instead of electricity for their displays if power is required.
  15. Competitors in this event at the National Leadership Conference are expected to attend the HOSA Showcase for this event. Team members will stand with their displays and share event experiences with conference delegates. Team members will take their displays at the conclusion of the Showcase.
  16. In the event of a tie, a tie breaker will be determined by the areas on the rating sheet section(s) with the highest point value in descending order.
  17. Competitors must be familiar with and adhere to the **"General Rules and Regulations of the National HOSA Competitive Events Program."**

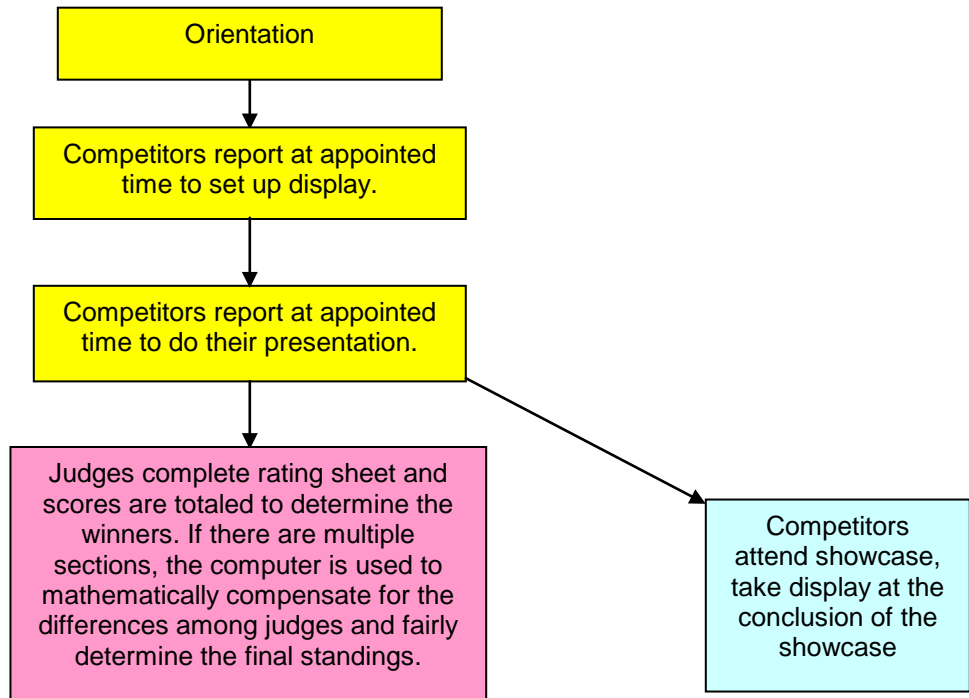
**Required Personnel (Per Section):**

1. One Event Manager per event
2. One Section Leader per section
3. One Timekeeper per section
4. One-two Judges per section – one should be a health professional.
5. One-two event assistants per section
6. One QA to provide quality assurance for the event by ensuring that the guidelines are followed and all event documents are complete.

**Facilities, Equipment and Materials (Per Section):**

1. One table per team (6' tables) or two teams per table (8' tables).or banquet rounds, usually placed in one long row per section.
2. Two - three chairs per display or table (for competitors while they are waiting to be judged, and for judges during the competitor presentation.)
3. Calculators, clip board and pencils for judges
4. Event evaluations and pencils for competitors to complete evaluation
5. Tape measure
- \*\*\* 6. All audio-visual equipment needed is the responsibility of the competitor
- \*\*\* 7. OPTIONAL: Competitors may bring a plain, white cloth table drape
8. Per section: 1 minute and stop cards
9. Team numbers for tables
- \*\*\* 10. Print or electronic copy of the event guidelines for the event orientation (one per team).

**Event Flow Chart**



## CAREER HEALTH DISPLAY JUDGE'S RATING SHEET

Section # \_\_\_\_\_ Team # \_\_\_\_\_

Level \_\_\_\_\_ SS \_\_\_\_\_ PS/Collegiate

Judge's Signature \_\_\_\_\_

Items Evaluated	Points Possible					Points Allocated
	Superior	Excellent	Good	Fair	Poor	
<b>1. Presentation/Demonstration</b>						
Career information presented in a clear and concise manner	10	8	6	4	2	
A variety of methods were used to complete the career research	5	4	3	2	1	
Team members were able to communicate accurately to judges information regarding this career area	10	8	6	4	2	
Voice (volume/grammar) and enthusiasm	5	4	3	2	1	
Appearance, poise, eye contact, gestures	10	8	6	4	2	
<b>2. Display/Career Area/Cluster:</b>						
Artistic/design value	10	8	6	4	2	
Creativity	10	8	6	4	2	
Display method chosen was easy to follow, neat, and appropriate.	10	8	6	4	2	
Career information included, but not limited to: training, career skills, licensure, certification, salary and employment outlook	10	8	6	4	2	
General Career Information	10	8	6	4	2	
<b>3. Display was within listed dimensions</b>						
<i>All points are awarded for this item if display is within the proper dimensions, and no points if it is not.</i>	10					
<b>TOTAL POINTS -- Possible/Awarded</b>	100	72	54	36	18	