

# Goat Breeds

You're Welcome

# Anglo-Nubian

- Origin: England 1850
- US Origin: JR Gregg, California 1896
- Characteristics:
  - Color: Any color or markings
  - Use: All-purpose; meat, milk, & hide
  - Fact: Regarded as an “aristocratic” looking goat
  - Fact: High fat content in milk
- Advantages: Large size, Lots of flesh, Extended milking season
- Disadvantage: Lower milk production than other breeds



# Angora

- Origin: Asia Minor between 1571 and 1451 BC
- US Origin: Dr. James Davis, South Carolina 1849
- Characteristics:
  - Color: White
  - Use: Wool (Mohair)
  - Fact: Mohair has a smoother surface and a very thin, smooth scale compared to wool
  - Fact: Both sexes are horned, but males have a spiral to their horns
- Advantages: Mohair, Adaptability
- Disadvantage: Susceptibility to external parasites, Prolifacy, Hardiness, High nutritional requirements, Lacks felting properties



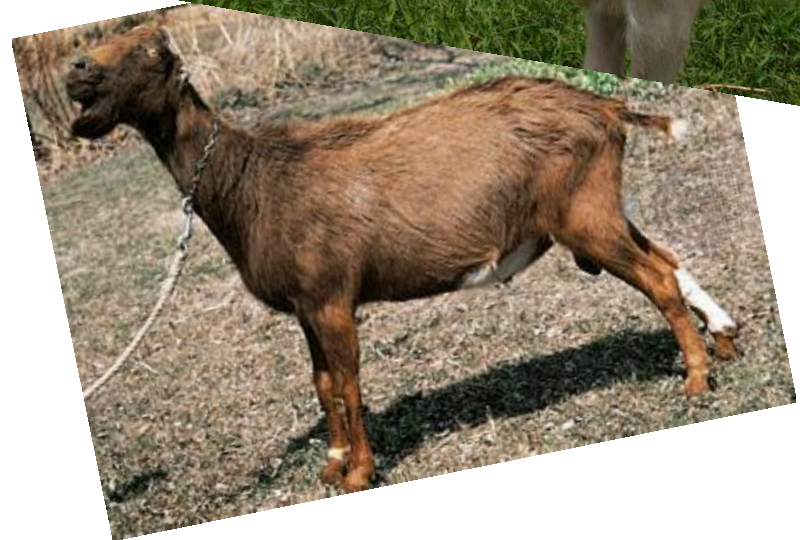
# Boer

- Origin: South Africa 1800's
- US Origin: Texas 1993
- Characteristics:
  - Color: White body, with reddish brown head (color varies)
  - Use: Meat
  - Fact: One of the most popular goat breeds in the world
  - Fact: "Boer" is farmer in Dutch
- Advantages: Fast growth rate, High carcass quality, High disease resistance, Extended breeding season
- Disadvantage: Two to four teats in females (disqualified if have more than two)



# La Mancha

- US Origin: Eula Frey, Oregon 1930's
- Characteristics:
  - Color: Any color or markings
  - Use: Milk
  - Fact: High butterfat content
  - Fact: Two types of ears – elf and gopher; length is no more than 2 inches
- Advantages: Dairy temperament, Sturdiness, Can produce within a hardship
- Disadvantage: Can have a roman nose which is a birth defect in this breed



# Mytonic

- US Origin: Jon Tinsley, Tennessee 1880
- Characteristics:
  - Color: Any color, mostly black and white
  - Use: Meat
  - Fact: When startled, their external muscles freeze for at least 10 seconds causing them to collapse (Defense mechanism)
- Advantages: Easier to care for and maintain, Breeds aseasonally
- Disadvantage: Slightly smaller than other standard goats



# Pygmy

- Origin: Africa 18<sup>th</sup> Century
- US Origin: Rhue Family, California 1959
- Characteristics:
  - Color: Any color or markings
  - Use: Milk or Meat (uncommon), Mostly used as companions
  - Fact: Breed continually through out the year
  - Fact: Animals kept as pets usually undergo cesarean's
  - Fact: Originally known as Cameroon Dwarf Goats
- Advantages: Produce a large amount of milk compared to size
- Disadvantage: Size, Dystocia

