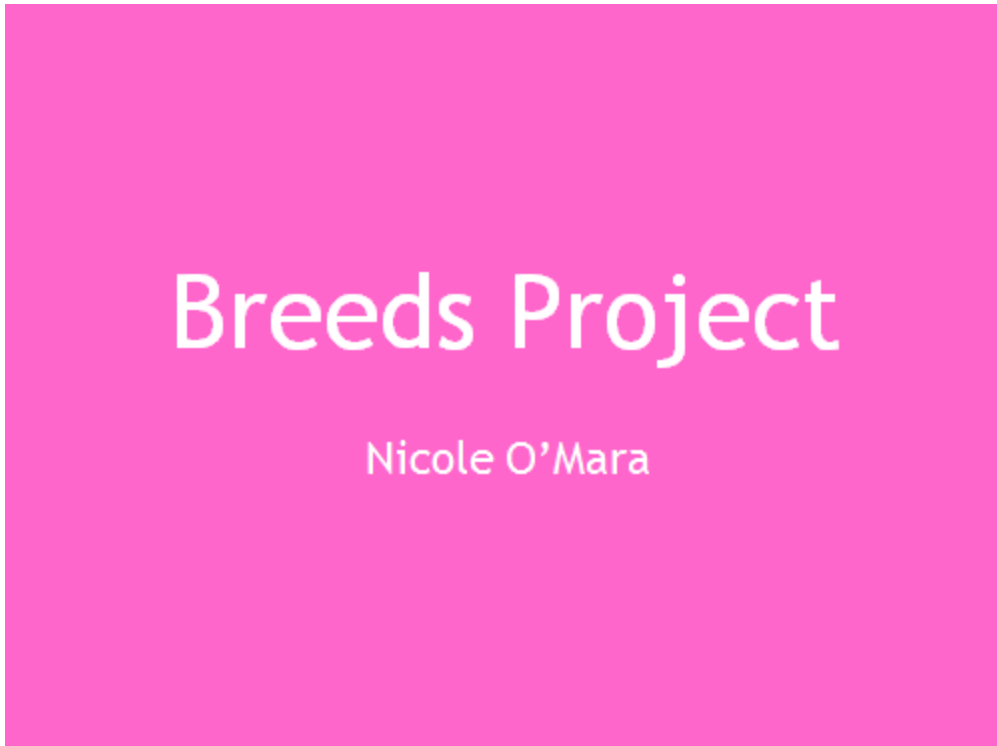


Getting started on the Breed's Project

1. Set up your power point title slide with ANIMAL BREEDS or BREEDS PROJECT and YOUR NAME



2. Set up the TABLE OF CONTENTS – each species grouping should be included (ie. Beef Cattle, Dairy Cattle, Horses, etc)



3. Set of the SPECIES GROUPINGS PAGES for each species (ie. Beef Cattle – then list Angus, Beefalo, Beefmaster, Black Baldy, Brahman, Brangus, etc)

Beef Cattle

- Angus
- Beefalo
- Beefmaster
- Black Baldy
- Brahman
- Brangus
- Charolais
- Chianina
- Gelbvieh
- Hereford
- Limousin
- Shorthorn
- Simmental
- Texas Longhorn

4. Set up the pages for each BREED, type each category needed and copy and paste to each breed slide under that species (ie. List the categories for beef cattle on the Angus slide and then copy and paste to the remaining beef cattle slides, so you don't miss any information)

Angus

• Click to add text



- Origin
 - When/Where
- US Origin
 - When/Where/Who
- Characteristics
 - Color
 - P/H
 - Fact
- Advantages
- Disadvantages

5. Collect information on each species by the assigned due date
6. Be sure to include 2 pictures per breed to receive full credit (5 out of 5)
7. LINK your slides together – 3 ways

Beef Cattle

- Angus
- Beefalo
- Beefmaster
- Black Baldy
- Brahman
- Brangus
- Charolais
- Chianina
- Gelbvieh
- Hereford
- Limousin
- Shorthorn
- Simmental
- Texas Longhorn

[Get on back to the Table of Contents](#)

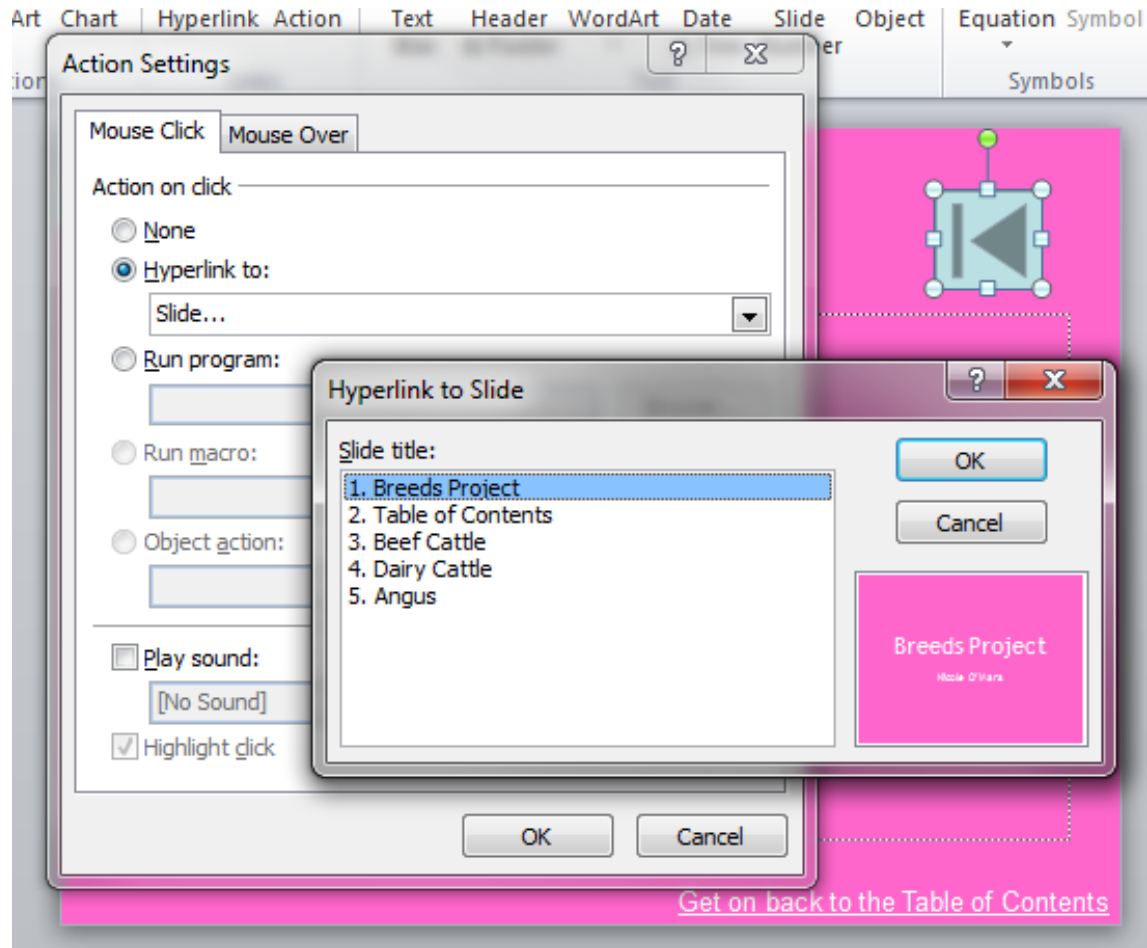
Action Button

Hyperlink Words

Hyperlink Pictures/ Shapes

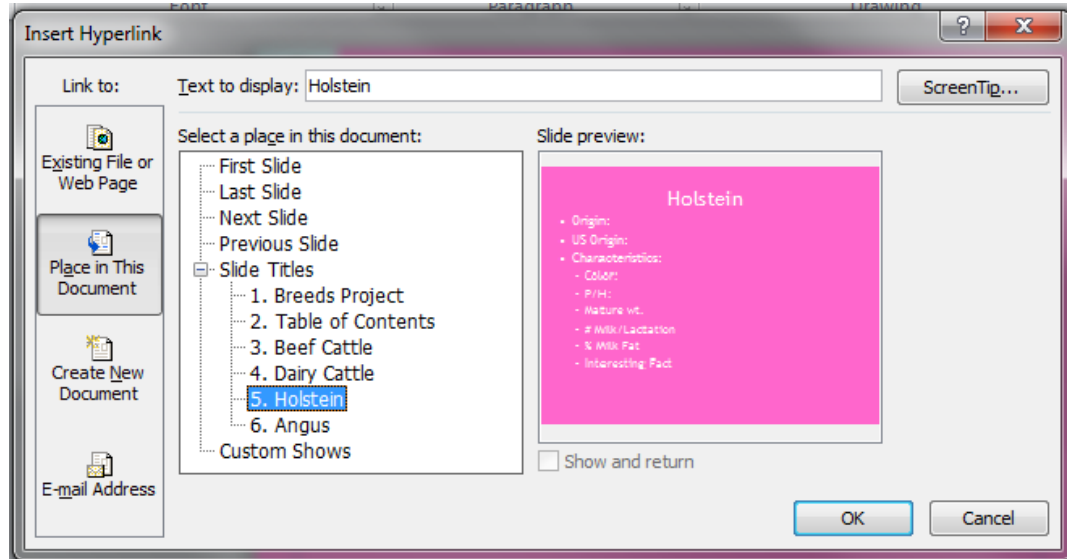
Go Back

- a. Action Buttons:
 - i. INSERT tab
 - ii. Click SHAPES
 - iii. Scroll to bottom – ACTION SHAPES
 - iv. Select proper button and put on your slide, ACTION SETTING box will appear, choose Hyperlink to SLIDE ..., then a second box will appear, choose appropriate slide from list and click OK



b. Hyperlink Words:

- i. Select the word you want to link and RIGHT CLICK on your mouse
- ii. Scroll to HYPERLINK
- iii. Select PLACE IN THIS DOCUMENT and then select the proper slide and click OK



c. Hyperlink Pictures:

- i. Select the picture you want to hyperlink and RIGHT CLICK on your mouse
- ii. Scroll to HYPERLINK
- iii. Select PLACE IN THIS DOCUMENT and then select the proper slide and click OK

